

ABOUT US

At **MG SQUARE BUILDCONS**, we understand that people everywhere are searching for a home to call their own. A home is an adored memory that lasts endlessly, where the each walls squeeze memories, the ceilings shelter love and laughter, where the quiet corners offer a much-needed pause and life itself becomes a reason to celebrate. We want to make the journey as joyful as the moment when you finally find the perfect home. So we begin by partnering with our customers from the start and being there when it matters the most right from online search to MG SQUARE Associates to home loans to paperwork to finally finding that perfect home. At MG SQUARE we help you find triumph. We adhered to the philosophy of "owning a home is a keystone of wealth, both financial affluence and emotional security".

OUR VISION

Delivering Integrity that you cherish for a lifetime.

OUR MISSION

To be the first choice for our customers and partners in their journey of discovering, selling purchasing. We do that with data, design, technology, and above all the passion of our people, while delivering value to our customers.

NEAR BY

- IIT Patna Gate no 2 - 5 Mins - 1 Km
- NSIT - 10 Mins 4.7 KM
- Bihta Railway station - 8Mins - 2.1 Km
- NIT Patna- 15 Mins - 5.7Km
- ESIC - 10 Mins- 3.8KM
- Britannia Factory - 15 Mins - 5KM
- Mount Litera Zee school- 10 Mins- 3.4Km

- Air Force station - 18 mins- 7.8 KM
- NDRF Centre- 13 Mins- 4.8Km
- Bihta Airport - 19 Mins- 8.3KM
- Bihta market - 7Mins- 1.3Km
- NIELIT - 9 Mins- 3.9Km
- SDRF- 4 Mins- 1Km

6 सड़क 'मुख्य प्रधान' श्रेणी में जुड़ेंगी, जमीन का रेट ₹95 लाख प्रति कट्टा तक हो जाएगा

नोएडा से आगे निकला बिहटा, बना देश का नया रियल इस्टेट हब

500 एकड़ जमीन में फैला होगा ग्रेटर पटना

PATNA: सूबे में बिहटा अब विकास की नई इबारत लिख रहा है। शैक्षणिक, औद्योगिक के बाद अब रियल इस्टेट के क्षेत्र में हो रहे समावेशी विस्तार ने इलाके की खूबसूरती बढ़ा दी है।

नौबतपुर, बिहटा, फतुहा, बेलदारीचक व खुसरूपुर में बसेंगे सेटेलाइट टाउन

पहल: पटना के 14 जोन का बनेगा अलग-अलग प्लान

बिहटा और संपतचक को मिला नगर परिषद का दर्जा, पालीगंज और पुनपुन बने नगर पंचायत

Why DREAMMANOR?

- Luxuries Township
- Best Education Hub
- Best Residential Zone in Bihar
- Prime Location
- Airport
- Best Hospital Facility
- Modern Facility
- Metro Approach
- Pay Just 40% & Take Possession
- Easy Connectivity
- Railway Station

*PLC = 10%
*Park Facing and Corner Plot



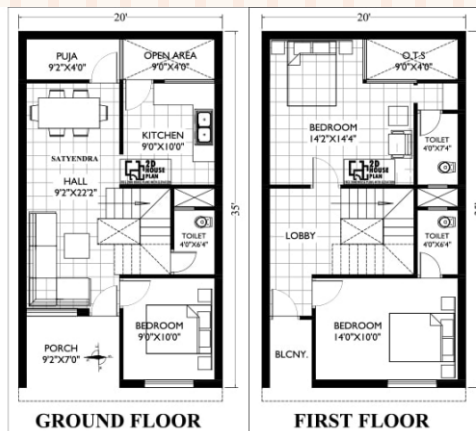
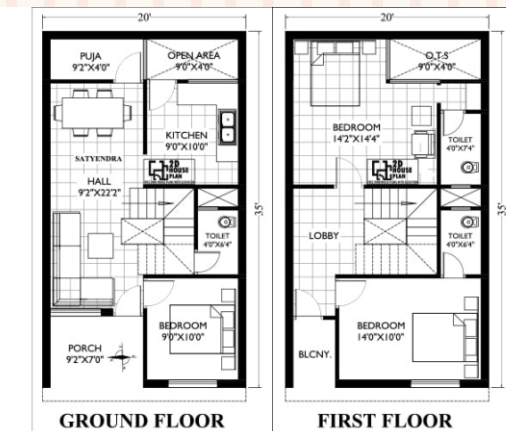
DUPLEX HOUSE



SIMPLEX HOUSE



PLOTS



Plot Details

SN.	Plot Name	Plot Size in Sq. Feet	SN.	Plot Name	Plot Size in Sq. Feet
1	Executive Class	900 Sq. Feet	3	Royal	1800 Sq. Feet
2	Premium	1200 Sq. Feet	4	Banglow	2400 Sq. Feet

Note: For the Corner Plot and Park Facing Plot, You have to Pay 10% Extra.

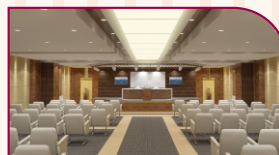
Amenities...



24x7 Security



CCTV Camera



Meeting Hall



30 Ft./20 Ft. Road



Street Light

Existing Development Around The Dreammanor



IIT PATNA



FDDI COLLEGE



NILIT



NSIT BIHTA



METRO RAIL



BRITANNIA INDUSTRIES



MAHINDRA LOGISTIC



ESIC HOSPITAL



BIHIT INT. AIRPORT



TEXTILE PARK



Netaji Subhas Medical College & Hospital, Patna

NSMC & HOSPITAL



HERO INDUSTRIES



IT PARK



FLIPKART



BIHTA RAILWAY ST.



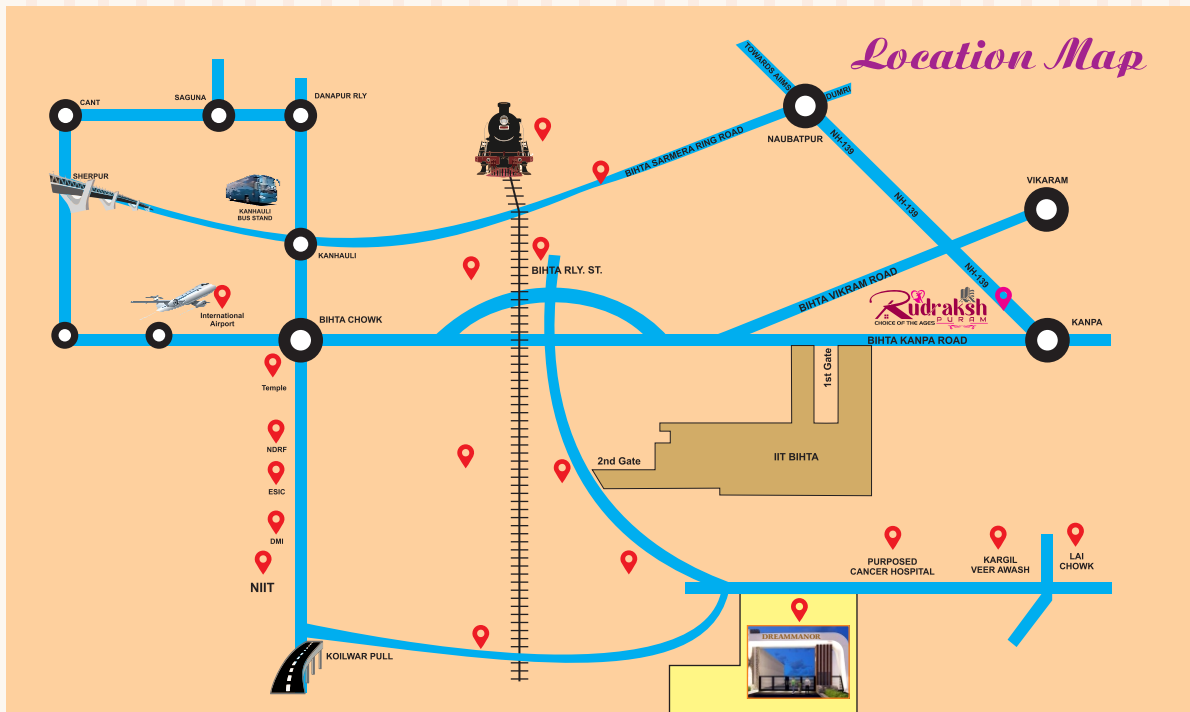
NIT BIHTA



AIIMS PATNA



PRIYAGOLD INDUSTRIES



Rate: _____ **Contact No.:** _____

Kankarbagh Office : 3rd Floor, Godawari Complex, 90 Ft. Road, Near Ishan International School, Malahi Pakdi, kankarbagh, Patna-800 020

Boring Road Office : Om Bhawan, Opp. Metro Shoes, Boring Road, Patna 800 013,

ONGOING PROJECT

UPCOMING PROJECTS



Dumri - Balaji Homes



Bihta - Rudraksh Puram



Gammadien City Phase-I, Bir



Darbhanga



Muzaffarpur